



THE SAME HOSPITALITY
WITH MORE CHARM
THAN EVER



TIVOLI
AVENIDA LIBERDADE
LISBOA HOTEL

tivolihotels.com



W E L C O M E T O T I V O L I A V E N I D A L I B E R D A D E

Having opened its doors in 1933, the Tivoli Avenida Liberdade has become one of the main points of interest and meeting places among both the Portuguese and foreign elite. Providing the most sophisticated, notable restaurant and bar experiences and leisure options, reflecting all the latest trends in hospitality, the Tivoli Avenida Liberdade has proudly reached the status of benchmark hotel within the vibrant capital.

An iconic establishment within Portuguese tourism, it recently underwent a complete renovation, enhancing its charismatic personality, the prestige of the Tivoli brand, and the luxury, immaculate services that have endured over decades of history.

Located at Lisbon's most elegant address, Tivoli Avenida Liberdade is just minutes away from some of the city's most iconic neighbourhoods - including Príncipe Real, Chiado, Bairro Alto and Alfama - and right in the heart of an area of luxury retail filled with notable international brands. Discover Lisbon's best-kept secrets thanks to our Concierge, who has gained Golden Key recognition.

L O C A T I O N

Located in the centre of Lisbon, on the iconic Avenida da Liberdade, 8 km from Lisbon Airport.

Coordinates: N 38° 43' 16.42', W 9° 8' 49.35'.

A C C O M M O D A T I O N

285 Rooms, including:

- 85 Deluxe Rooms
- 61 Deluxe Rooms City View
- 70 Deluxe Rooms Avenue View
- 34 Deluxe Family Rooms
- 20 Junior Suites
- 13 Executive Suites
- 1 Diplomatic Suite
- 1 Presidential Suite

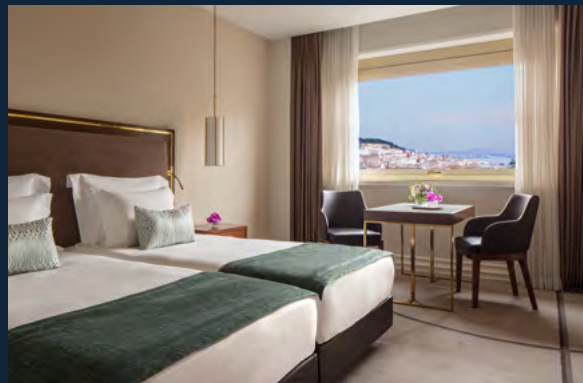
DELUXE ROOM

These classically designed rooms provide views into the hotel's interior courtyard. Located on the 1st and 8th floor of the hotel, these are made up of a double bed or two twin beds, a desk with two chairs and a fully equipped bathroom with a walk-in shower and/or bath.



DELUXE ROOM CITY VIEW

Located between the 1st and 8th floors of the hotel, these air-conditioned rooms present views of the city. Classically designed, these rooms are composed of a double bed or two twin beds, a desk with two chairs and a fully equipped bathroom with a walk-in shower or bathtub.



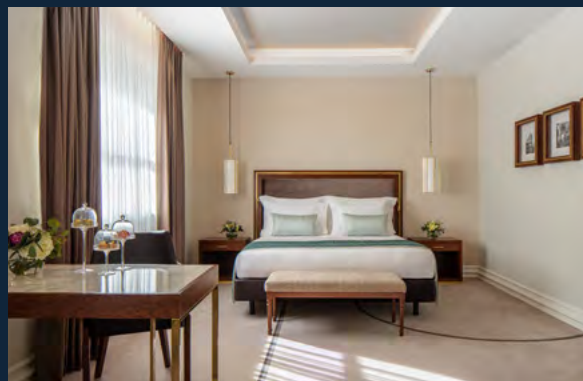
DELUXE ROOM AVENUE VIEW

Located between the 1st and 8th floors of the hotel, these air-conditioned rooms provide views over Avenida da Liberdade. Classically designed, these rooms are composed of a double bed or two twin beds, a desk with two chairs and a fully equipped bathroom with a walk-in shower or bathtub.



DELUXE FAMILY ROOM

These expansive, spacious rooms are composed of a double bed or two twin beds and a sofa-bed. These classically designed rooms are located between the 3rd and 8th floors, providing views into the hotel's interior courtyard. They comprise a living area and a fully equipped bathroom with a walk-in shower and bath.



JUNIOR SUITE

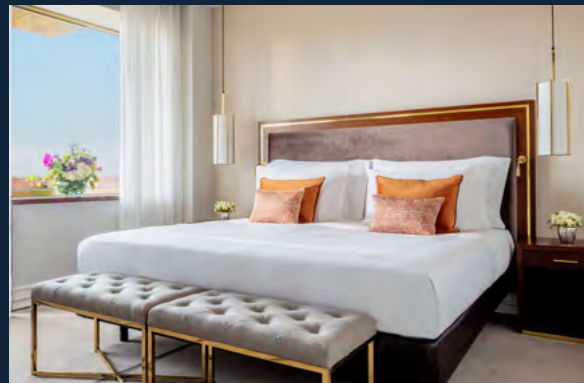
Located from the 1st to 8th floors, these classically designed suites provide exclusive services which include daily tea and access to the Executive lounge. With each room measuring around 484.37 ft², these spacious suites with city views are composed of a bedroom with a double bed, separate living area with a sofa-bed, and a fully equipped bathroom with a walk-in shower and bath.



EXECUTIVE SUITE

With each room measuring around 209,97 ft², a stay in these suites comes complete with exclusive services such as daily tea and access to the Executive lounge area, as well as views over the city or avenue. Located between the 1st and 8th floor and boasting unique designs, these rooms are composed of a double bed, a separate living area, and a fully equipped bathroom with a walk-in shower and bathtub.

Early check-in and late check-out available, subject to availability.



DIPLOMATIC SUITE

Exclusively decorated using actress Beatriz Costa's collection, this classically designed suite features a balcony overlooking Avenida da Liberdade and the Tagus River. Measuring around 828.82 ft², this suite, located on the 4th floor, consists of a bedroom with a double bed, a separate living room, a bathroom and a fully equipped bathroom with a walk-in shower and bathtub. Included in the stay, exclusive services are also made available to guests, such as daily tea and access to the Executive Lounge area.

Early check-in and late check-out available, subject to availability.



PRESIDENTIAL SUITE

This uniquely designed suite features pieces provided by the Ricardo Espírito Santo Foundation and Mily Possoz, providing a balcony that overlooks Avenida da Liberdade. Located on the 7th floor, this large 2 906.25 ft² suite comprises a bedroom, walk-in wardrobe, living room, dining room, kitchen area, guest bathroom, and a fully equipped bathroom with a rain shower and chromotherapy hot tub. Included in the stay, exclusive services are also made available to guests, such as daily tea and access to the Executive Lounge area. Early check-in and late check-out available, subject to availability.



SUMMARY OF BEDROOM TYPES

TYPE OF ROOM	TYPE OF BED	AREA	FLOOR	MAXIMUM ROOM OCCUPANCY
Deluxe Rooms	27 rooms with twin beds 58 rooms with a queen bed	248 ft ² 23 m ²	3 rd to 7 th	2
Deluxe Rooms City View	37 rooms with twin beds 24 rooms with a queen bed	248 ft ² 23 m ²	1 st to 8 th	2 + Extra Bed
Deluxe Rooms Avenue View	11 rooms with twin beds 23 rooms with a queen bed	248 ft ² 23 m ²	1 st to 8 th	2
Deluxe Family Rooms	11 rooms with twin beds 23 rooms with a queen bed	484 ft ² 45 m ²	1 st to 8 th	3 or 2+2
Junior Suites	20 Junior Suites with queen size beds	484 ft ² 45 m ²	1 st to 8 th	3 or 2+2
Executive Suites	13 Executive Suites with king size beds	689 ft ² 64 m ²	1 st to 8 th	3 or 2+2
Diplomatic Suite	1 Diplomatic Suite with king size bed	829 ft ² 77 m ²	4 th	3 or 2+2
Presidential Suite	1 Presidential Suite with king size bed	2 906 ft ² 270 m ²	7 th	2

HOTEL SERVICES

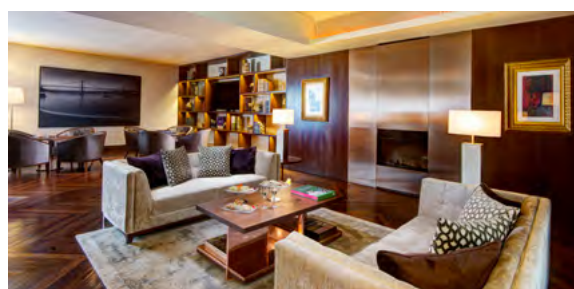
- Free WIFI
- Valet parking
- Free parking
- Car wash service
- Express Laundry Service
- Free shoe shine service
- Welcome amenities for children
- 24-hour room service
- 24-hour concierge
- 24-hour business centre
- PressReader - Digital newspapers and magazines

LEISURE SERVICES

- Outdoor swimming pool
- Pool Bar (May - September)
- SEEN Restaurant by Olivier da Costa
- Cervejaria Liberdade Restaurant
- Sky Bar by SEEN
- Lobby Bar
- Anantara Spa
- The Shape Club

EXECUTIVE LOUNGE

An exclusive space designed for both work and relaxation, exclusively for use by guests staying in suites who will be able to enjoy a daily selection of breakfast products, snacks, refreshments, and cocktails. Our exclusive benefits include secretarial services, a private concierge, priority check-in and check-out. Open daily from 9:00 to 18:00.



BUSINESS CENTRE SERVICES

- 24-hour Free WIFI
- Printer and scanner available



NEARBY ATTRACTIONS

- International designer shops along the entirety of Avenida da Liberdade
- Avenida metro station
- São Jorge Castle (20-minute walk)
- Baixa and Chiado shopping areas (20-minute walk)
- Lisbon Casino (15-minute drive)
- Time Out Market (13-minute drive)



RESTAURANTS AND BARS

SEEN BY OLIVIER DA COSTA

Headed up by Chef Olivier da Costa, Seen Lisboa has built on the raging success of Seen São Paulo, with the exclusive concepts of the Restaurant & Bar transported to Lisbon. The undisputed star of Lisbon nightlife, it is the place to be and be seen.

Boasting a sophisticated atmosphere, Seen provides the option of sipping on a signature cocktail in its 360-degree entrance bar. Delight in a menu inspired by contemporary Luso-Brazilian cuisine or the freshest sushi as you take in sweeping views over the city. The restaurant's contagious energy spreads all the way to the rooftop bar – the Sky Bar by Seen – one of the city's genuinely iconic spots.

Opening times: 18:30 – 1:00 (Sunday to Thursday)
18:30 – 2:00 (Friday and Saturday)



CERVEJARIA LIBERDADE

Cervejaria Liberdade, which faces out onto the Avenida's wide pavements, is a paradise for seafood lovers who seek to savour a trip through the classics of Mediterranean-inspired Portuguese cuisine: a wide selection of locally caught fresh fish and shellfish, as well as classic dishes served to reinvent the spirit of the most typical breweries.

The wine list features a selection of the best and most famous regional Portuguese producers, in addition to a selection of craft beers. Digestifs provide a smooth finish to any variety of superb meals.

Cervejaria Liberdade seats 108 diners – 78 at tables and 30 at the bar.

Opening times:
Breakfast buffet: 7:00 – 10:30
Restaurant: 12:30 – 23:30



SKY BAR BY SEEN

The trendiest, liveliest rooftop in the city, this is the perfect place to enjoy late afternoons and evenings as you sip on the best signature cocktails or a glass of champagne to the sound of the resident DJ.

Sky Bar by SEEN has a maximum capacity of 350 diners, seating 101 guests. An option available is to book the VIP Lounge, which is suitable for small events and private meetings, with a maximum capacity of 60 people.

Opening times: 17:00 - 1:00 (April-October)



LOBBY BAR

Because a moment of relaxation or informal work meeting calls for gourmet snacks, a glass of wine or a signature cocktail, the Lobby Bar presents a varied menu of tapas and snacks and a selection of the best wines and drinks. Late afternoons promise the sounds of the Lobby Bar's very own jazz trio - the perfect backing track to any conversation.

Opening times: 10:30 - 1:00



POOL BAR

Located in our tropical garden, the Pool Bar is open throughout the summer, serving refreshments and light snacks. In addition to sandwiches, salads and ice cream, the menu includes an excellent range of cocktails, local wines, and natural juices.

Opening times: 10:00 - 19:30 (May-September)

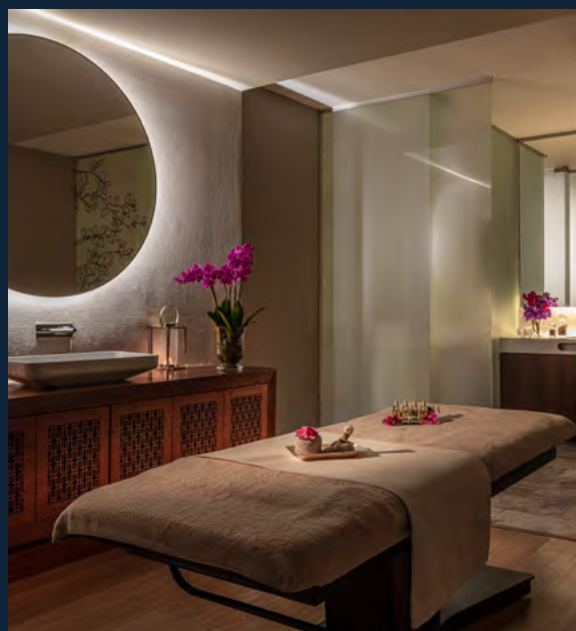


ANANTARA SPA AVENIDA LIBERDADE

The Anantara Spa, internationally recognized Spa brand, is a haven of tranquility at Tivoli Avenida Liberdade. Leave behind the stress of any long journey the second you step into the spa, ready to relax both your body and mind.

The Anantara Spa features six spacious treatment rooms and a sauna, benefiting from the world-renowned expertise of Thai Anantara techniques. When it comes to face care, the team of specialists provides exclusive, luxurious facial treatments featuring the high-end cosmetic brands Biologique Recherche and Natura Bissé.

Opening times: 10:30 - 19:00



THE SHAPE CLUB

A gym featuring state-of-the-art equipment is ready to welcome guests who want to keep on top of their exercise routine and healthy lifestyle, whether away on holiday or for work.

Here, guests can reach perfect fitness levels thanks to state-of-the-art exercise machines, cardio equipment, and complimentary bottled water. The Shape Club provides all the services necessary for any daily workout or personal training session, which are available by appointment only.





TIVOLI WEDDINGS

Plan your wedding in one of the most romantic cities in the world. The unique architectural charm of Tivoli Avenida Liberdade makes it the perfect setting in which to tie the knot. Our team of professionals is on hand to plan

your big day, from the main ceremony in the Conference and Events Centre, with its palatial design and extravagant frescoes, to sunset celebrations in our rooftop Sky Bar.



MEETINGS AND EVENTS

Do business in an environment that promises both adventure and inspiration. We've got everything you may need and more, whether you opt for a big celebration or intimate gathering. The Conferences and Events Centre's palatial design values experience and state-of-the-art equipment. Let our team take care of everything, from banquets to team-building activities, in the rich urban setting that is the city of Lisbon.

INFRASTRUCTURE AND SERVICES AVAILABLE

- Rooms equipped with state-of-the-art technology
- Welcome equipment for groups
- 13 Meeting rooms, 3 foyers, 1 Executive Lounge and 1 Lounge (Mily Possoz)
- WiFi in public areas and meeting rooms
- Analogue and ISDN lines in rooms
- Valet parking
- Direct access to buses

PREMIUM EVENTS

- Check-in at the airport
- Private check-in at Mily Possoz lounge
- Express check-out service
- 24-h smartphone line available to contact the Events Assistant
- Event Concierge - Providing immediate support at meetings and events
- Prior meeting with hotel management
- Post-event meeting
- Amenity for the group leader
- Office for the group leader
- Daily Briefings with the group leader
- Internet included

Premium services subject to availability and quote.

MEETINGS AND EVENTS

MEETING ROOMS TIVOLI AVENIDA LIBERDADE

ROOM	FT²	OVAL TABLE	HOLLOW SQUARE	U-SHAPED TABLE	SINGLE TABLE	BANQUET	COCKTAIL	CABARET	CLASSROOM	THEATRE
MEZZANINE FLOOR										
Pardal Monteiro	1 087.15	24	28	24	20	60	90	40	45	60
Parque Mayer	850.34	32	33	29	26	50	60	32	36	50
Sintra	1 173.26	30	38	34	26	64	100	42	54	80
Boardroom	452.08	-	-	-	14	-	-	-	-	-
LOBBY FLOOR										
TIVOLI	2 012.85	60	70	60	50	160	250	102	110	200

MEETING ROOMS CONFERENCES AND EVENTS CENTRE

ROOM	FT²	OVAL TABLE	HOLLOW SQUARE	U-SHAPED TABLE	SINGLE TABLE	BANQUET	COCKTAIL	CABARET	CLASSROOM	THEATRE
FLOOR 0										
Barata Salgueiro	1 130.21	-	-	-	-	-	150	-	-	-
FLOOR 1										
Condes de Sucena I + II + III	3 121.53	80	88	80	76	240	400	151	210	322
Condes de Sucena I ou III	1 054.86	26	36	27	22	56	70	40	60	98
Condes de Sucena II	731.94	24	30	24	20	40	50	32	36	72
Castello Lopes	2 271.18	44	72	54	40	180	300	112	144	260
Avenida	592.01	20	27	21	20	20	40	21	24	30
FLOOR 2										
Norte Júnior	645.83	32	28	25	28	40	70	32	36	48



H O T E L P O L I C I E S

LATE CHECK-IN

Guests may check in from 3 pm onwards. Early check-in is available, subject to a surcharge.

LATE CHECK-OUT

Guests are required to check out by midday. Late check-out is available, subject to a surcharge.

CREDIT CARDS

Tivoli Avenida Liberdade accepts the following credit cards: American Express, Visa, MasterCard, Diners and JCB.

CHILDREN'S POLICY

Accommodation is free for children up to 12 years old (one child per double room). Food and drink is free for children up to 3 years old. Children between 4 and 12 years old get 50% off their stay.



TIVOLI
AVENIDA LIBERDADE
LISBOA HOTEL


THE LEADING HOTELS
OF THE WORLD®

Av. da Liberdade, 185 - 1269-050 Lisboa, Portugal
T. +351 213 198 900
E. avenidaliberdade@tivoli-hotels.com
tivolihotels.com

DISCOVERY 