

---

## PERSONAL. PROFESSIONAL. MEMORABLE.

Radisson Blu Latvija Conference & SPA Hotel is one of the most recognizable buildings in Riga and the largest business and conference hotel in the Baltics, located in the business center of the city, close to major public institutions, cultural and religious centers, as well as the most popular shopping and entertainment venues.

### EVERYTHING YOU NEED UNDER ONE ROOF

- The leading full-service business hotel in the Baltics
- 571 rooms and suites with spectacular city views
- Conference and events center, more than 3,661 sq m in size
- 16 adaptable, state-of-the-art meeting rooms capable of hosting 2,500 people
- Restaurant Esplanade, 26th floor Skyline Bar and Lobby Bar
- ESPA Riga – luxury on-site spa
- Central location
- Underground parking
- Safe and secure

### PACKAGES

To save you time and make your life easier, we've developed a range of ready-made full day and half day packages. If you have more specific needs, our talented team can also design for you customised solutions.

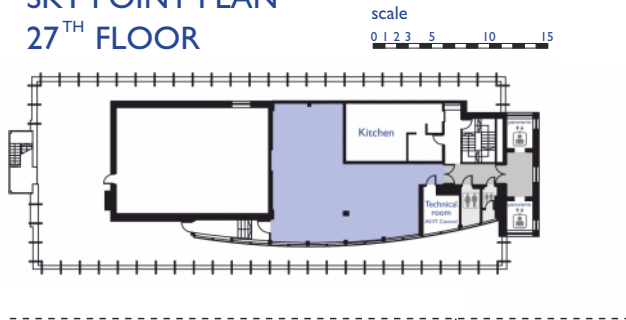
### MEETING FACILITIES

We proudly offer 16 luminous meeting rooms for banquets, seminars, conferences, product presentations or workshops. Our meeting rooms feature air conditioning and the one on the 27th floor even large panoramic windows. You can choose from wide range of capacity conference rooms and public spaces. The latest conference technology and high-speed wireless internet access provides a highly productive meeting atmosphere.

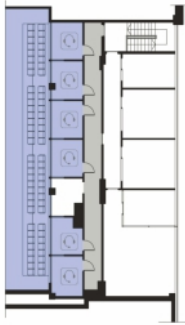
### RADISSON REWARDS FOR BUSINESS

As a Radisson Rewards for Business member you can earn valuable points at Radisson Hotel Group properties around the world. Whether you're planning a conference or making travel arrangements for a colleague, you can earn points from every business booking and receive outstanding offers along the way. Points can be redeemed for a wide selection of rewards like gift cards, Free Award Nights, airline miles, and more.

## SKY POINT PLAN 27<sup>TH</sup> FLOOR



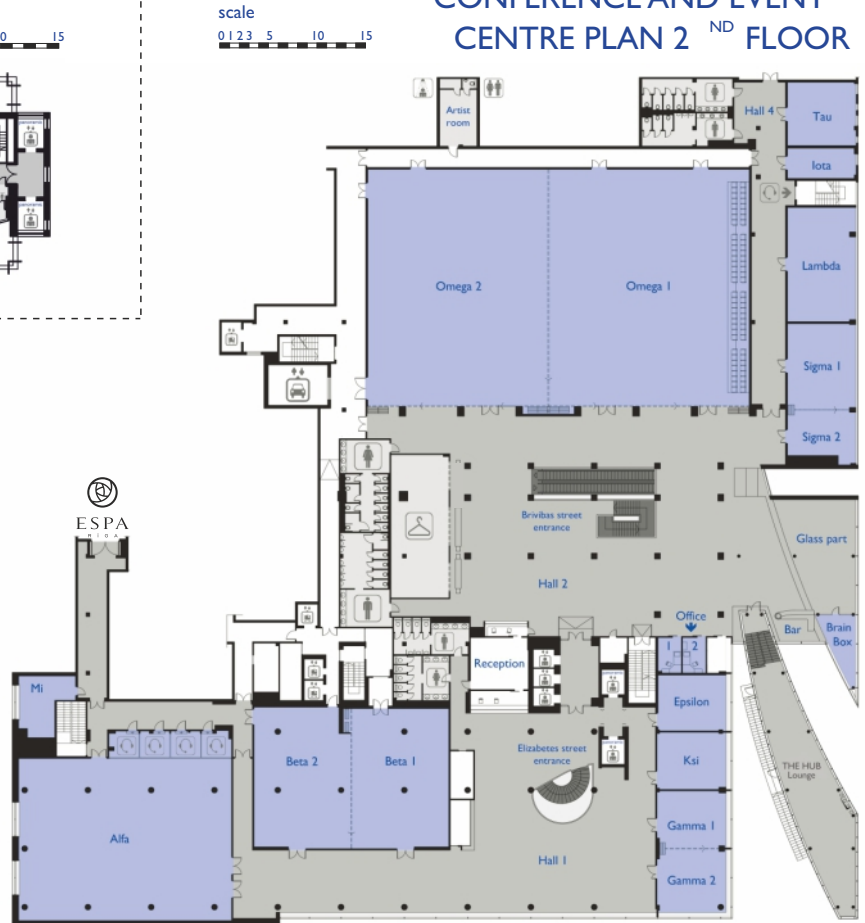
## OMEGA TRANSLATION CABINS PLAN



## SECTION



## CONFERENCE AND EVENT CENTRE PLAN 2<sup>ND</sup> FLOOR



## MEETING ROOM CAPACITY

Rooms	Daylight	m <sup>2</sup>	Theatre	Classroom	Boardroom	U-shape	O-shape	Banquet	Cabaret	Reception	Ceiling height	Length and width
<b>Alfa</b>	✓	360	360	212		55	72	230	120	350	3.18	16.93 x 21.85
<b>Beta</b>		281	200	120				120	78	220	2.8	19.87 x 14.2
<b>Beta 1</b>		141	70	50		20	28	60	36	130	2.8	9.93 x 14.2
<b>Beta 2</b>		138	100	60		34	40	70	42	120	2.8	10.48 x 14.2
<b>Gamma</b>	✓	85	85	54	24	36	40	40	30	65	2.69	12.31 x 6.86
<b>Gamma 1</b>	✓	40	36	22	12	16	24	16	12	22	2.69	5.86 x 6.86
<b>Gamma 2</b>	✓	44	36	22	12	16	24	16	12	22	2.69	6.34 x 6.86
<b>Ksi</b>	✓	41	36	22	12	16	24	16	12	22	3.1	5.85 x 6.96
<b>Epsilon</b>	✓	40	36	22	12	16	24	16	12	22	2.69	5.80 x 6.88
<b>Omega</b>		940	1000	700		140	180	550	385	940	4.95	39 x 24
<b>Omega 1</b>		493	500	300		74	104	250	186	445	4.95	20.4 x 24
<b>Omega 2</b>		443	443	300		74	104	250	186	443	4.95	18.4 x 24
<b>Tau</b>	✓	46	42	24	12	16	24	20	12	20	2.4	6.5 x 7.05
<b>Iota</b>	✓	21									2.4	6.9 x 3.1
<b>Lambda</b>	✓	81	50	50	24	34	40	40	30	50	2.25	11.71 x 6.35
<b>Sigma</b>	✓	95	95	58	24	36	40	40	30	60	2.25	13.56 x 6.93
<b>Sigma 1</b>	✓	60	50	30	16	26	30	25	18	30	2.25	8.78 x 6.93
<b>Sigma 2</b>	✓	34	20	16	8	14	16	10	8	15	2.34	5.64 x 6.93
<b>Mi</b>	✓	25			14						2.88	
<b>THE HUB Lounge</b>	✓	77	50	30	16	28	32	42	28	60	2.57	
<b>Hall 1</b>	✓	532						180		400	3.18	
<b>Hall 2</b>	✓	865						260		600	2.59	
<b>Hall 4</b>		130								50		
<b>Office 1</b>		8			4						2.6	3.65 x 2.40
<b>Office 2</b>		8			4						2.6	3.65 x 2.40
<b>Brain Box</b>	✓	14			8						3.98	
<b>Skyline + Lounge</b>	✓	385								200		
<b>Skyline Bar only</b>	✓	285								150		
<b>Skyline Lounge only</b>	✓	100								50		
<b>"27"</b>	✓	110	60	34	14	27	30	40	30	70	2.75	11 x 6.10