



WHERE TIMELESS
LUXURY MEETS
VINTAGE HERITAGE



TIVOLI
KOPKE
PORTO GAIA HOTEL



KOPKE

tivolihotels.com

W E L C O M E T O T I V O L I K O P K E

Tivoli Hotels & Resorts joins hands with Kopke, the oldest port wine house, to present timeless luxury in historic Porto. Located in Vila Nova de Gaia, just across the river from the UNESCO World Heritage city centre, Tivoli Kopke Porto Gaia is a new 5-star hotel steeped in a unique heritage.

What had been for centuries home to port cellars and warehouses is now a burgeoning wine and dining district, and our hotel is in the very centre of it all.

You may spend your days with us, leisurely exploring the riverfront promenade's restaurants and bars, or cross the famed Luiz I Bridge to historic Ribeira.

Returning to the hotel, a classic country estate inspired by Kopke's rich history, simple yet exquisite pleasures await.

The modern gastronomy of Iberia is proudly presented with passion by a Michelin-starred Chef. And Portugal's finest wines, including our very own vintage ports can be sampled at any of our five restaurants and bars.

Restorative wellness facilities include the sanctuary spa, a gym, a hammam, a sauna room, and indoor and outdoor swimming pools.

Here, each moment of your stay is infused with elegance by a dedicated service that has been refined over nearly a century.

L O C A T I O N

Located in the historic Gaia riverside, a short distance from the centre of Porto, our hotel is part of a vibrant district brimming with museums, restaurants, shops, and a wine school. Iconic sights like Luiz I Bridge and Serra do Pilar are within walking distance.

Coordinates: N 41°08'03", W8°37'02"

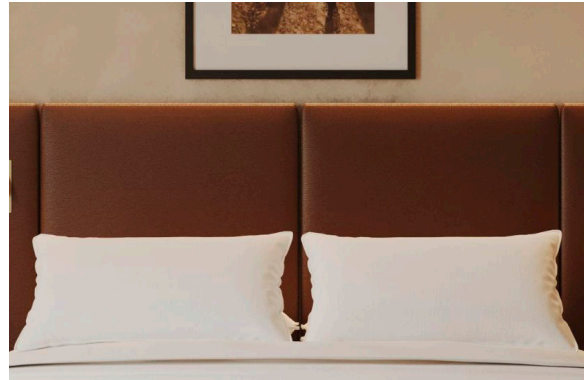
A C C O M M O D A T I O N

150 Rooms and Suites, including:

| | |
|---|------------------------------|
| 5 Superior Interior Skylight Rooms | 2 Junior Suites with Terrace |
| 12 Superior Rooms | 4 Junior Suites River View |
| 17 Superior Rooms with Terrace | 1 Family Suite |
| 39 Deluxe River View Rooms | 1 Vintage Suite |
| 35 Deluxe River View Rooms with Terrace | 1 Douro Suite |
| 32 Premium Terrace River View Rooms | 1 Kopke Presidential Suite |

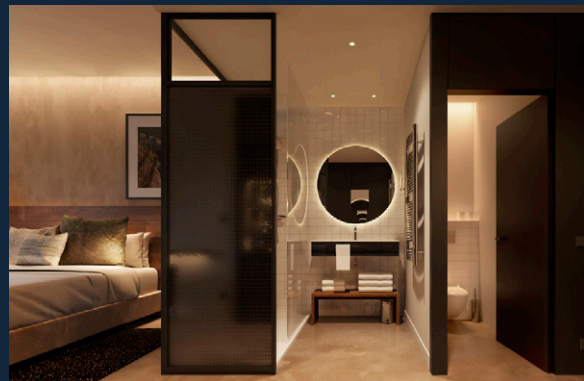
SUPERIOR INTERIOR SKYLIGHT ROOM

Superior rooms, while cosy, have been thoughtfully designed for your relaxation and pleasure. The mid-century modern furnishings have been lovingly handcrafted, while more contemporary comforts include a wall-mounted flat-screen television and a Nespresso machine.



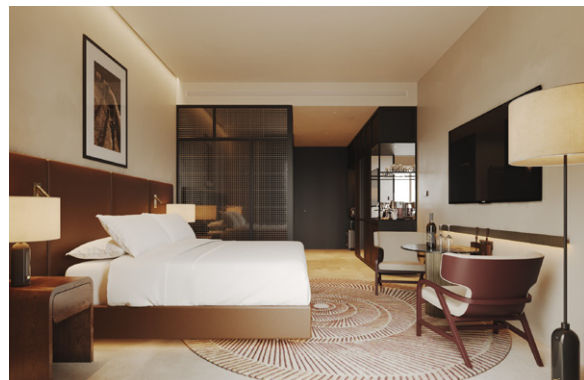
SUPERIOR ROOM

These superior rooms look out over the hotel gardens. Returning, you will enjoy comforts including refreshments in your minibar, a rainfall shower to cool off under, and your choice of pillows to sink into for the most restorative of sleeps.



SUPERIOR ROOM WITH TERRACE

Our most coveted superior rooms look out onto our peaceful gardens. You may greet the sun and flowers in bloom each day out on your private terrace, a freshly made espresso in your hand. Inside, timeless elegance and modern comforts ensure your pleasure.



DELUXE RIVER VIEW ROOM

The Douro River is the very lifeline of Porto, winding its way through lush valleys home to century-old vineyards, including Kopke's own. Admire its beauty from the privacy of your deluxe room; you may also book adjoining rooms if travelling with friends or family.



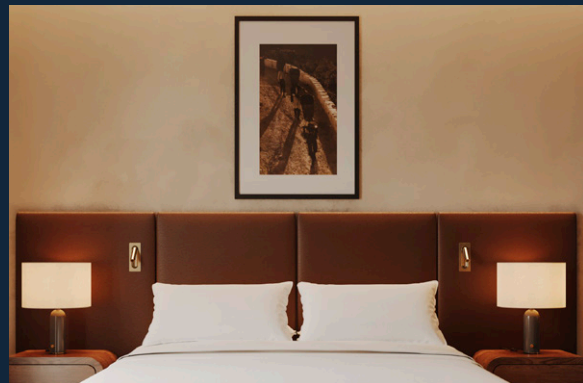
DELUXE RIVER VIEW ROOM WITH TERRACE

Views of the winding Douro are best admired from a private terrace. Spend all day watching out for boats drifting by, and enjoying the warmth of the sun, perhaps with a glass of Kopke port in hand, the grapes grown in the very valleys made lush by the river.



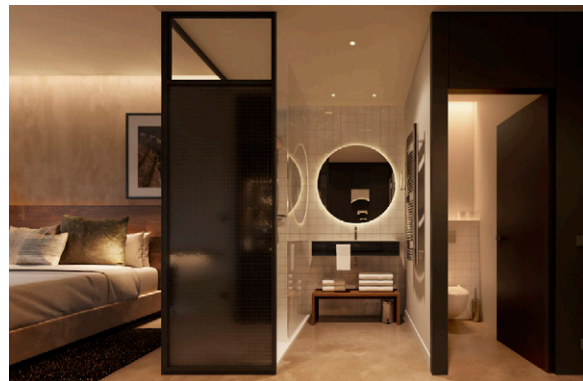
PREMIUM RIVER VIEW ROOM WITH TERRACE

Our premium rooms offer a more spacious layout inside, ideal for small families or friends travelling together. Adjoining rooms can also be booked for larger parties. Gather together on your terrace overlooking the Douro River, sharing moments to cherish in the sun.



JUNIOR SUITE WITH TERRACE

Our junior suites are luxurious in space. There is an elegant living area in which to relax and repose, as well as a sunny outdoor terrace, ideal for peaceful afternoon siestas. Inside, extra comforts include the generous king-sized bed with your choice of pillows.



JUNIOR SUITE RIVER VIEW

Located on our higher floors, these junior suites offer sweeping panoramas of the Douro River, lifeline of the city and its ancient port houses from which the hotel derives its rich history. Enjoy from the comfort of your king-sized bed or elegant living area.



FAMILY SUITE

Timeless family vacations unfold in these extra-spacious suites. Thoughtful details to ensure the comfort of each and every member include your choice of king or twin beds, an additional sofa bed, and bathtub for soaking in. Precious moments together unfold in the separate living room overlooking the city.

VINTAGE SUITE

Inspired by Kopke's rich history as the world's oldest port house, this suite is imbued with small touches that convey a sense of time and place. A spacious layout allows for a king-sized bed, bathroom with separate rainfall shower and tub, a living room, and a sunny terrace overlooking the river.

DOURO SUITE

This suite is stylish in design and luxurious in comforts. Located on the corner of one of our top floors, it enjoys an unrivalled view of the Douro River from the bedroom, separate living room and sunny terrace, truly iconic.



KOPKE PRESIDENTIAL SUITE

Unrivalled in exclusivity, the top-floor presidential suite can be accessed by a private elevator. It is designed for entertaining, with two storeys, reception and meeting rooms, and a kitchen in which to prepare drinks and canapes for your guests. Most impressive of all are the sweeping views of the Douro River, to be enjoyed from multiple terraces.



SUMMARY OF BEDROOM TYPES

| TYPE OF ROOM | TYPE OF BED | AREA | FLOOR | MAXIMUM ROOM OCCUPANCY |
|--------------------------------------|----------------------|-----------|------------|------------------------|
| Superior Interior Skylight Room | Twin, Double or King | 27 sqm | 6 | 2 adults |
| Superior Room | Twin, Double or King | 27-35 sqm | 4, 5 and 7 | 2 adults |
| Superior Room with Terrace | Twin, Double or King | 35 sqm | 4, 5 and 6 | 2 adults |
| Deluxe River View Room | Twin, Double or King | 27-35 sqm | 5, 6 and 7 | 2 adults |
| Deluxe River View Room with Terrace | Twin, Double or King | 35 sqm | 2, 5 and 6 | 2 adults |
| Premium River View Room with Terrace | Twin or King | 34 sqm | 3 | 3 adults |
| Junior Suite with Terrace | King | 45 sqm | 4 | 3 adults |
| Junior Suite River View | King | 32 sqm | 5 and 6 | 3 adults |
| Family Suite | King | 55 sqm | 6 | 3 adults |
| Vintage Suite | King | 92 sqm | 5 | 3 adults |
| Douro Suite | King | 103 sqm | 5 | 3 adults |
| Kopke Presidential Suite | King | 208 sqm | 6 | 2 adults |

ROOM FACILITIES

- Complimentary WiFi
- Pillow Menu
- LCD TV
- In-room safe
- Tivoli Bathrobes and slippers
- 24-hour in-room dining
- Nespresso coffee machine and tea facilities
- Mini Bar
- Iron and Ironing Board (on request)
- Turndown service

HOTEL FACILITIES

- WiFi across the hotel
- Outdoor and indoor swimming pools
- Two restaurants and three bars
- Tivoli Spa with 5 treatment rooms, indoor swimming pool, sauna and hammam
- Tivoli Shape gym
- Concierge service
- Meeting rooms and Business centre services
- StayApp – Digital platform with resort info and booking service
- PressReader – Digital newspapers and magazines
- Valet Parking
- Accessibility for conditioned mobility



NEARBY ATTRACTIONS

GAIA RIVERSIDE

The sunny riverfront promenade makes for pleasant exploration. There are a number of restaurants to enjoy, as well as water sports and river cruises.

RIBEIRA

Just across the Luiz I bridge is the famed historic centre, with the cathedral, beautiful churches, the stunning Palacio da Bolsa, and vibrant markets to take in.

HOUSE OF KOPKE

As the oldest port cellar in the world, you may taste an exquisite selection of aged tawnies, whites and single harvests just down the road on the riverfront.

PORT WINE CELLARS

Historically home to port cellars and warehouses, this side of the river has been chicly regenerated with museums, restaurants, bars and boutiques now occupying pride of place.

RESTAURANTS AND BARS

BOA VISTA TERRACE

Boa Vista Terrace welcomes guests throughout the day with its warm ambience. Mornings bustle with a American buffet, while for lunch and dinner, we invite you to explore cuisines from around the world and savour each experience.

Opening hours:

Early Bird Breakfast: 5:00 – 7:00

Breakfast: 7:00 – 11:00

Dining: 12:30 – 23:00



1638 RESTAURANT & WINE BAR

The fresh, vibrant flavours of Iberia are proudly presented by our Michelin-starred Chef. They draw inspiration from the riches of the Atlantic Ocean, as well as the fertile Douro Valley that surrounds.

As befitting our history and locale, our Wine Bar boasts a fine collection of wines, ports and spirits. You may select a bottle from the floor-to-ceiling display, or leave your fate up to our connoisseur sommeliers. Enjoy accompanied by exquisite bites of smoked fish, Iberico ham, caviar and truffle.

Opening hours:

Dining: 18:30 – 23:00

Wine Bar: 12:30 – 00:00



ROOFTOP BAR

Our beautiful rooftop offers some of the best views in Porto, extending all the way to the Douro River. Especially poignant at sunset, we invite you to join us for tapas and cocktails accompanied by live music and mingling.

Opening hours: 12:30 - 23:00

* Timetable may vary according to weather conditions



POOL BAR

Located within our peaceful gardens, the drinks and light meals on offer at our pool bar are as refreshing as the setting. Swim, refuel with a healthy lunch, then unwind into a tranquil afternoon with an imaginative menu of cocktails.

Opening hours: 12:30 - 19:00

* Timetable may vary according to weather conditions



WELLNESS

Tivoli is your invitation to slow down, reconnect with yourself, and restore balance to your life, and our wellness facilities have been designed with these goals in mind.

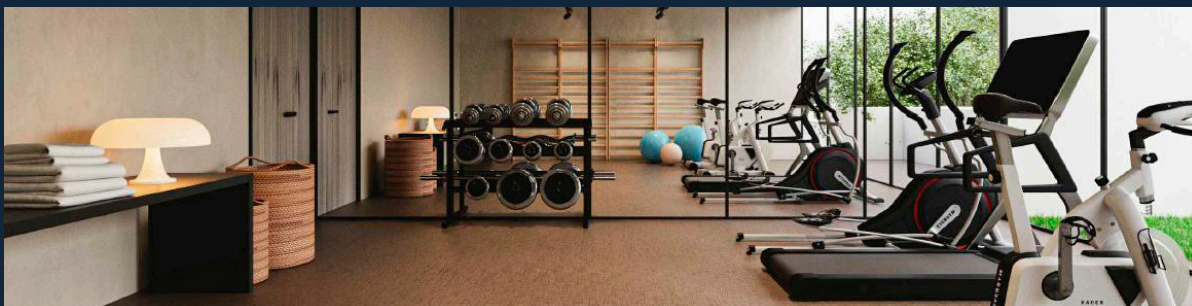
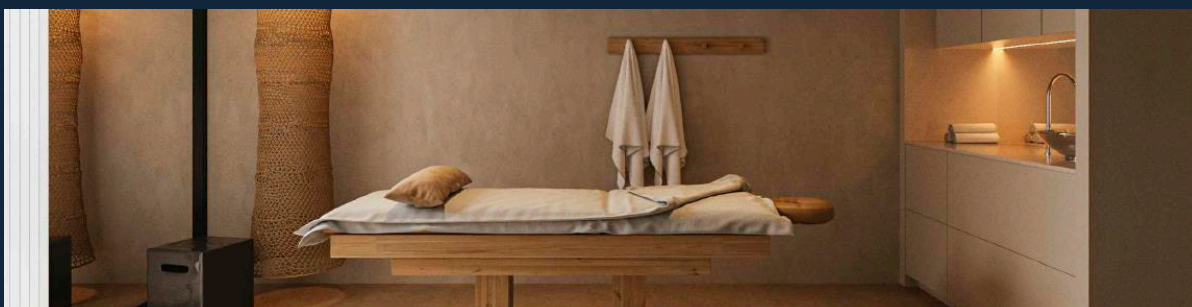
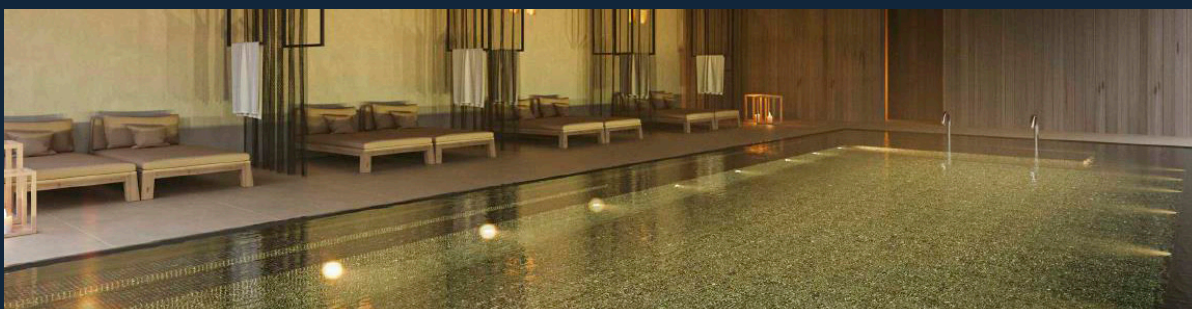
Tivoli Spa is a calming sanctuary, where you may enjoy holistic, personalised treatments as well as beauty rituals. The Tivoli Shape studio is modern and well equipped, while laps can be swum in the outdoor swimming pool.

Relaxation takes place in the sauna, hammam, or temperature-controlled indoor pool, where you may float while enjoying views of the peaceful gardens through floor-to-ceiling glass.

Opening hours:

Tivoli Spa Kopke: 10:00 – 21:00

Tivoli Shape Kopke: 24 Hours





TIVOLI WEDDINGS

Timeless romance awaits with Tivoli your host, and our setting is among the most magical in Porto. Hidden away in lush gardens, just like the original Tivoli in Italy, you may celebrate outdoors, in a banquet hall, or on the rooftop overlooking

the river, each setting uniquely beautiful. You and your guests will be catered to in every way by our dedicated and passionate team, ensuring your special day is memorable always.



MEETINGS AND EVENTS

Whether large or small, our location, ambience and facilities lend a feeling of intimacy to your events. We have various formal and informal spaces in which you may host up to 900 guests. Each is equipped with state-of-the-art audiovisual and lighting technology and can be tailored to your needs. A professional team will be at your service to ensure your event unfolds perfectly.

Follow a day of meetings with an elegant cocktail party on the terrace, and a garden banquet catered by our Michelin-starred Chef, sure to impress even your most discerning of clients.

INFRASTRUCTURE AND SERVICES AVAILABLE

- Rooms equipped with state-of-the-art technology
- Welcome equipment for groups
- 6 Meeting and Event rooms, 1 Foyer, 1 Terrace, and 2 Coffee Halls
- WiFi in public areas and meeting rooms
- Valet parking

MEETING ROOM CAPABILITIES

| ROOM | AREA | FLOOR | BANQUET | BOARDROOM | COCKTAIL | CLASSROOM | THEATRE | U-SHAPE TABLE | CABARET |
|----------------|------|-----------------------|---------|-----------|----------|-----------|---------|---------------|---------|
| São Luiz I | 150 | 2 nd Floor | 80 | 24 | 150 | 60 | 120 | 21 | 40 |
| São Luiz II | 153 | 2 nd Floor | 80 | 24 | 153 | 60 | 123 | 21 | 40 |
| São Luiz III | 171 | 2 nd Floor | 100 | 30 | 171 | 66 | 130 | 24 | 45 |
| Rumilã I | 40 | 2 nd Floor | 30 | 22 | 40 | 24 | 30 | 20 | 15 |
| Rumilã II | 42 | 2 nd Floor | 30 | 22 | 40 | 24 | 30 | 20 | 15 |
| Rumilã III | 62 | 2 nd Floor | 40 | 26 | 62 | 33 | 50 | 24 | 20 |
| Coffee Hall I | 92 | 2 nd Floor | | | 150 | | | | |
| Coffee Hall II | 57 | 2 nd Floor | | | 75 | | | | |
| Foyer | 145 | 2 nd Floor | | | 100 | | | | |
| Terrace | 844 | 2 nd Floor | 600 | | 750 | | | | |

H O T E L P O L I C I E S

CHECK-IN

Guests may check in from 3 pm onwards. Early check-in is available, subject to a surcharge.

CHECK-OUT

Guests are required to check out by midday. Late check-out is available, subject to a surcharge.

CREDIT CARDS

Tivoli Kopke Porto Gaia Hotel accepts the following credit cards: American Express, Visa, and MasterCard.

CHILDREN'S POLICY

Accommodation is free for children up to 12 years old (one child per double room).

Food and drink is free for children up to 3 years old.

Children between 4 and 12 years old get 50% off their food and drink consumptions.



ABOUT KOPKE

Founded in 1638, Kopke is recognized as the oldest Port Wine house in the world and was established many years before the Douro Demarcated Wine Region. Its library of very old wines, including a plethora of tawny Ports and very rare white Port wines, has sealed Kopke's long-established reputation for producing the finest Ports, recognized by some of the most influential wine critics and international press.

The Kopke cellars are a standout feature, having been carefully restored and integrated into the design of the hotel. Guests can enjoy the opportunity to fully immerse themselves in the world of Port wine during their stay, celebrating Kopke's centuries-old tradition of producing exceptional tawny and white ports.



TIVOLI
KOPKE
PORTO GAIA HOTEL



KOPKE

Rua do Barão de Forrester 69,
4400-307 Vila Nova de Gaia, Portugal
kopke@tivoli-hotels.com
tivolihotels.com

DISCOVERY 