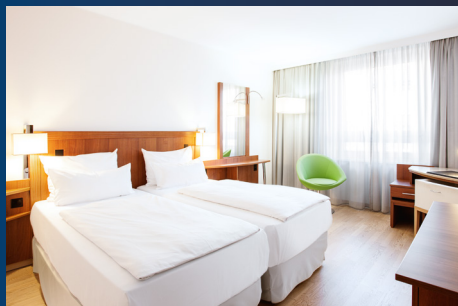


NH Hamburg Altona

Thanks to the hotel's excellent transport links, you can easily reach the city centre, the main arenas, both railway stations and the airport by either bus or car. But Hamburg is also a visitor magnet on account of its top-class leisure and cultural amenities.



- Distance to airport: 10 km
- Distance to main station: 7 km
- Distance to Altona station: 2 km
- Entfernung zur Neuen Flora: 1.8 km
- Distance to trade fair grounds: 4.5 km



NH Hamburg Altona
Stresemannstraße 363-369, 22761 Hamburg
Tel. +49 40 421060

Group Sales Office:
groups.de@nh-hotels.com
Tel.: +49 180 2225564*
nh-hotels.com/meetings

*€0.06 per call from German landlines, up to €0.42 per minute from mobiles



Events and meeting facilities

The hotel has 232 rooms and three junior suites. Whether seminars, conferences or business meetings, you can choose from nine air-conditioned conference rooms, the largest of which can accommodate up to 200 people. All rooms feature top-notch technical equipment, flexible layouts, Wi-Fi, projectors, projector screens, pin boards, flip charts, moderator's kits and plenty of natural light. Further conference technology is available on request. Our conference specialists will also be happy to help you organise special events, boat tours around the port and much, much more.



free



car launch



spa



eco



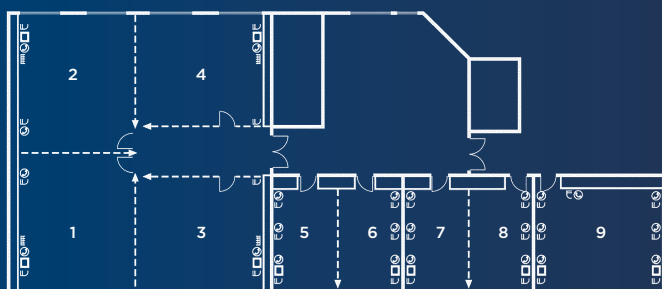
refurbished

NH Meetings – Inspire, Create, Enjoy

- Ambassador Service
- Specialized Advisory Service
- Customized Professional Response
- Free, Easy Wi-Fi
- Tempting Breaks
- Eco-Friendly Meetings
- High Tech made easy
- Always Yes!



Function rooms and capacities



Name	Measurements	Ceiling	m ²	Banquet	Block	Reception	School	Theatre	U-shape	Cabaret	Accessible for vehicles
1. Hafen 1	7 x 7,5	3	52	-	16	-	22	34	18	-	-
2. Hafen 2	7 x 7,5	3	52	-	16	-	22	34	18	-	-
3. Hafen 3	7,5 x 6,0	3	45	-	16	-	19	28	14	-	-
4. Hafen 4	7,5 x 6,0	3	45	-	16	-	19	28	14	-	-
Hafen 1 + 3	14,5 x 6,5	3	97	42	48	-	50	80	32	20	-
Hafen 2 + 4	14,5 x 6,5	3	97	42	48	-	50	80	32	20	-
Hafen 1 + 2	14,5 x 7,0	3	104	49	52	-	60	100	40	35	-
Hafen 1 - 4	14,5 x 15,0	3	215	100	-	-	130	190	-	70	x
5. St. Pauli 1	3,0 x 7,0	3	21	-	8	-	6	10	6	-	-
6. St. Pauli 2	3,0 x 7,0	3	21	-	8	-	6	10	6	-	-
St. Pauli 1 + 2	6,0 x 7,0	3	42	-	16	-	19	28	16	-	-
7. Horn1	3,0 x 7,0	3	21	10	8	-	6	-	6	-	-
8. Horn2	3,0 x 7,0	3	21	-	8	-	6	10	6	-	-
Horn 1 + 2	6,0 x 7,0	3	42	-	16	-	19	28	16	-	-
9. Wassertum	6,2 x 7,0	3	215	-	16	-	19	30	16	-	-